

感恩與讚美／組曲

Thanksgiving and Praise

獻上感恩 Give Thanks
擁戴祂為王 Crown Him King of Kings

Arranged by
Camp Kirkland and Tom Fettke

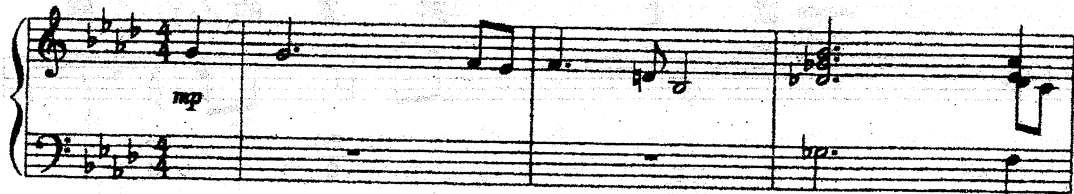
旁白：「主，謝謝祢與我們同在，（音樂開始）我們稱頌祢的名。」

今天晚上，我們以感恩進入祂的門，我們以讚美進入祂的院，而且我們也從祂的話語中確信，神必會為我們開道路。祂是昔在，今在，永在的。神。祂名稱為以馬內利——神與我們同在。讓我們一起揚聲來讚美祂，感謝祂今天晚上與我們同在。

DT73

流暢地 ♩ = 80

D^{b2}
F



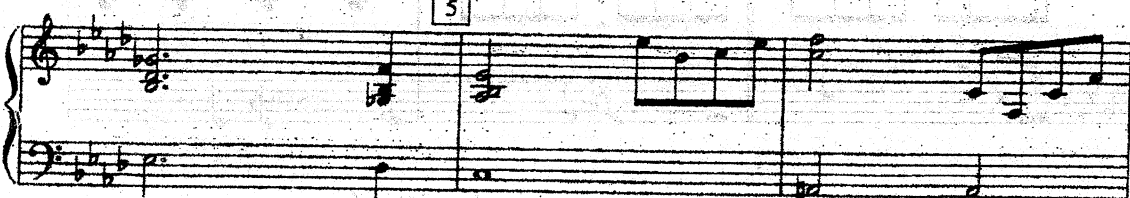
Ebm⁷

Gbmaj⁷
D^b

A^{b2}
C

F

A



Bbm

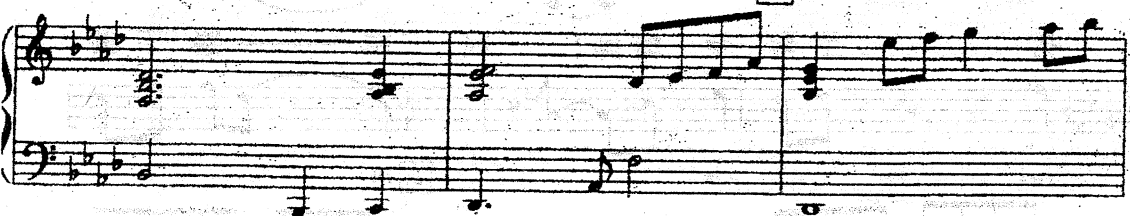
A^{b2}
C

D^{b2}

9

E^b

D^b

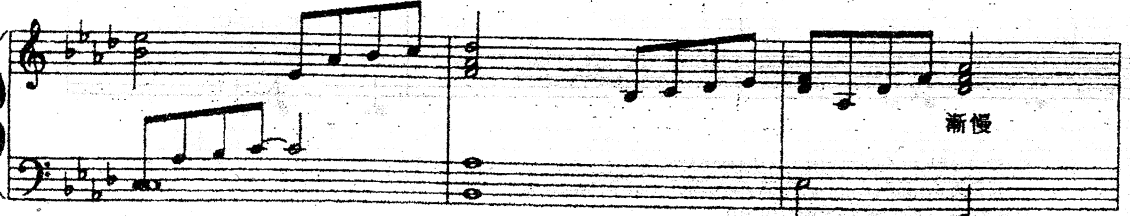


A^{b2}
C

Bbm⁷

D^b

E^b



DT74

13

$A\flat^2$ $D\flat$ $A\flat$ $E\flat$ $A\flat$

還原速度 *mf*

人人強而有力地唱 $\text{♩} = \text{ca. } 88$ 獻上感恩 (Henry Smith)

unison

齊唱 *mf*

17

堅定而流暢

unison 獻 上 感 恩 的 心， 歸

齊唱

 $A\flat^2$

17

 $E\flat^2$

G

 $E\flat$

G

21

給 至 聖 全 能 神， 因 祂——賜 下 獨

 Fm^2 Fm Cm

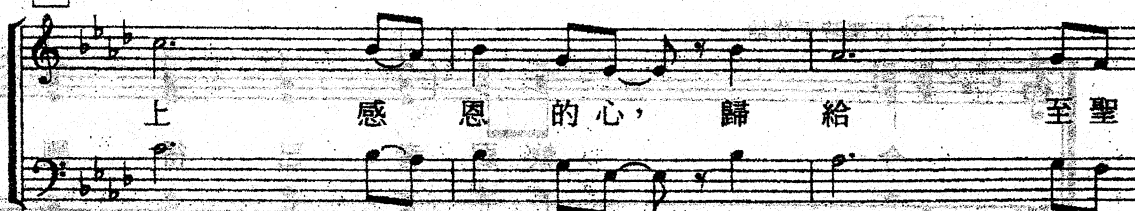
21

 $D\flat^2$

更強地

A \flat
CA \flat G \flat 2E \flat susCm
E \flat 

25



25

A \flat 2A \flat E \flat
GFm 2

Fm

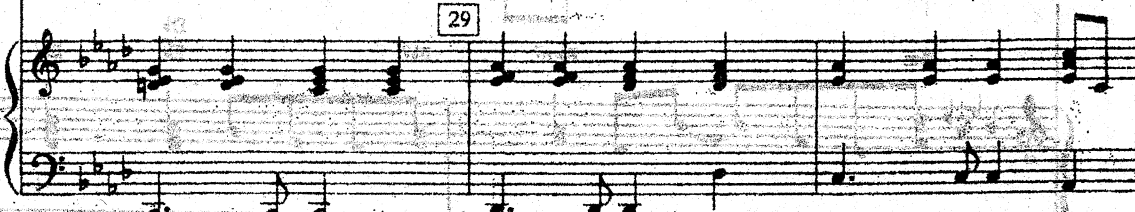


29

Cm 2

Cm

29

D \flat 2D \flat A \flat
CA \flat 

DT75

漸強

div. f

耶穌基督。主如

Gb2

Gb1

Ebsus

Eb

Eb/Db

漸強

33 反覆時更強地

今，軟弱者已得剛

Cm7

Fm7

Eb

F

Fm7

33

f 反覆時更強地

強：貧弱者已成富

Bbm

Bbm7

Eb7

Db

Eb

Eb7

37

足， 都 因 爲 主 已 成 就

37

A \flat Cm G Fm E \flat /F Fm

了—— 大 事。 如

G \flat 2 G \flat D \flat /F 1. E \flat 7sus E \flat 7 E \flat E \flat /D \flat

2. *mf* 42 事。 感 恩， 感

2. E \flat 7sus E \flat 7 D \flat /E \flat 42 A \flat D \flat /A \flat E \flat m/A \flat

DT76

漸快、漸強

恩, 感 恩!

Ab D♭/A♭ B♭m/A♭ Ab

漸快、漸強

接 Crown Him King of Kings 擁戴祂為王 (Sharon Damazio)

P.32 [23]

新速度、較快 ♩ = ca. 80

unison 48 *f* 詩班：強而有力地

擁戴祂 為 王,

unison

D♭/E♭ Ab Cm7 D♭2 D♭ D♭/E♭ E♭

48

52

擁戴祂 為 主, 奇 妙 神,

Ab C7/G Fm Fm/E♭ 52 D♭

Crown Him King of Kings

Words and Music by
SHARON DAMAZIO

Arranged by
Camp Kirkland and Tom Feltke

Warm but firm ♩ = ca. 72

DT14

C²

G²
B

C¹
A

Piano introduction in 4/4 time, marked *mf*. The melody is in the right hand, and the bass line is in the left hand. The key signature has one sharp (F#).

PRAISE TEAM

unison

5

mp

Vocal entry for the Praise Team, marked *mp*. The melody is in the right hand, and the bass line is in the left hand. The key signature has one sharp (F#).

Crown Him King of kings,

尊 嚴 王 之 王

Dsus

D

5

G

Bm⁷

C²

C
D

Piano accompaniment for the vocal entry, marked *mp*. The melody is in the right hand, and the bass line is in the left hand. The key signature has one sharp (F#).

div.

9

crown Him Lord of Lords,

Won-der-ful

尊 嚴 主 之 主

G

B⁷
D⁷

Em

Em
D

奇 妙 的

div.

9

Piano accompaniment for the vocal entry, marked *mp*. The melody is in the right hand, and the bass line is in the left hand. The key signature has one sharp (F#).

cresc.

Coun-se - lor, the Might-y God; _____

G² B Em F² F C D Dsus D

cresc.

[13] *mf* Em - man - u - el, God is with _____

us 馬 西 利 神 與 我 們

[13] G Bm⁷ C² C Am⁷ D F# A

[17] us, And He shall reign, He shall reign, He shall

在 神 聖 掌 權 神 聖 掌 權 神 聖 掌 權

G Bm⁷ C² B Em

[17]

DT15 *accel. and cresc.*

reign for - ev - er - more.

Am⁷ A Dsus D D Eb

accel. and cresc.

New tempo - faster ♩ = ca. 80

unison 23 **CHOIR**

Crown Him King of kings,

unison

23

f

Ab Eb Eb Cm⁷ Db² Eb Eb

27

crown Him Lord of lords, Won-der-ful

Ab G Fm Eb

27 Db

Coun-se - lor, the Might-y God;

全能真神

Ab2 C Fm7 Gb2 Gb Eb Eb-sus Eb

Em - man - u - el, God is with

以馬內利 神與我同在

Ab Cm7 D#2 D# Bbm7 Eb G Eb7 Eb

Alto optional
(sing if melody is too high)

us, And He shall reign, He shall reign, He shall

在祂要掌權 祂要掌權 祂掌

Ab Cm7 D#2 Ab2 C Fm

div. 35

DT16

reign for - ev - er - more.

權 永 遠 遠

Bbm Bb Ebsus Eb Eb E

D
E

E

slight rit.

40

PRAISE TEAM
a tempo stronger

Crown Him King of kings. crown Him Lord of

CHOIR and CONGREGATION stronger

Crown Him King of kings. crown Him Lord of

40

a tempo stronger

C#m7 D2 D E A

E

A

C#m7 G#

44

lords, Won-der-ful Coun-se-lor,

lords, Won-der-ful Coun-se-lor, the Might-y

主 奇妙 聖 全能 聖

F#m F#m/E D² D C³ F#m

44

48

the Might-y God, Em-man-u-

God, Em-man-u-

unison unison

耶穌

G² G D/E Esus E A C#m⁷

48

el, God is with us, And

Alto opt.

el, God is with us, And

利 神 與 我 們 同 在 天 地

D² D Bm⁷ E G⁷ B⁷ A C⁷m⁷

He shall reign, He shall reign, He shall reign for - ev - er

He shall reign, He shall reign, He shall reign for - ev - er -

聖 掌 權 祂 掌 權 祂 掌 權 耶 穌 王 道

D² A⁷ C⁷ F⁷m Bm B Esus E E

DT-17

more.

more.

A

A
G

B \flat
F

cresc.

59

a tempo

ff

Crown Him King of kings,

unison

ff a tempo

Crown Him King

of kings,

unison

Fsus

F

59

3

B \flat

Dm 7

E \flat 2

F \flat

F

rit.

a tempo

ff

63

crown Him Lord of lords, Won-der-ful

crown Him Lord of lords, Won-der-ful

div.

尊萬主 奇妙

Bb $\frac{D7}{A}$ Gm $\frac{Gm}{F}$ Eb2 Eb

63

Coun-se-lor, the Might-y God;

Coun-se-lor, the Might-y God;

全能真神

Bb2 $\frac{D}{D}$ Gm Ab2 Ab $\frac{Eb2}{F}$ Fsus F

67

Em - man - u - el, God is with

unison

Em - man - u - el, God is with

Alto opt.

unison

以 耶 和 華 神 與 我 們

Bb Dm7 Eb Cm7 F A C

67

70

us, He shall reign, He shall reign.

us, And He shall reign, He shall reign.

在 祂 要 掌 權 祂 掌 權

Bb Dm7 Eb D

70

73

He shall reign, He shall reign, He shall reign,

He shall reign, He shall reign, He shall reign,

祂掌權 祂掌權 祂掌權

73 Eb D Eb

DT18

He shall reign, He shall reign for - ev - er - more

div. He shall reign, He shall reign for - ev - er - more.

div. 祂掌權 祂掌權 永 遠 遠

73 Eb D Gm Cm7 C F#us F F# Bb D# Cm Ab Bb Bb Bb Bb

Choir and Praise Team only

79

fff

Em - man - u - el,

God is with

79

以馬內利

神與我們

B \flat Dm 7 E \flat Cm 7

F

A

C

fff

us

for - ev - er - more,

for - ev - er -

在

永

永

遠

遠

永

永

遠

B \flat B \flat
A \flat G \flat E \flat m 6

F

F

rit.

more!

B \flat D \flat

Cm

A \flat B \flat B \flat B \flat B \flat D \flat

Cm

B \flat B \flat Fm 7 B \flat

A

rit.